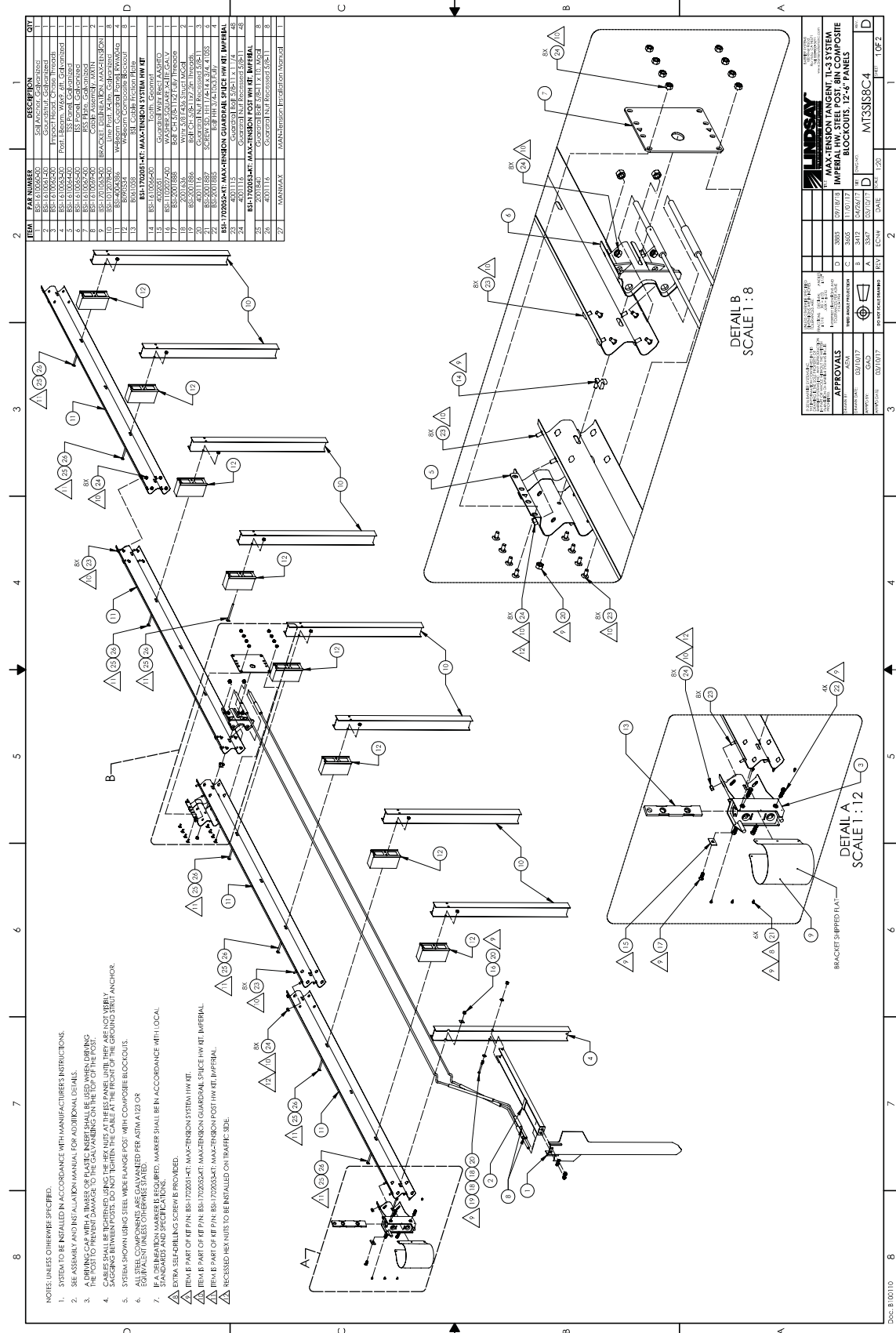
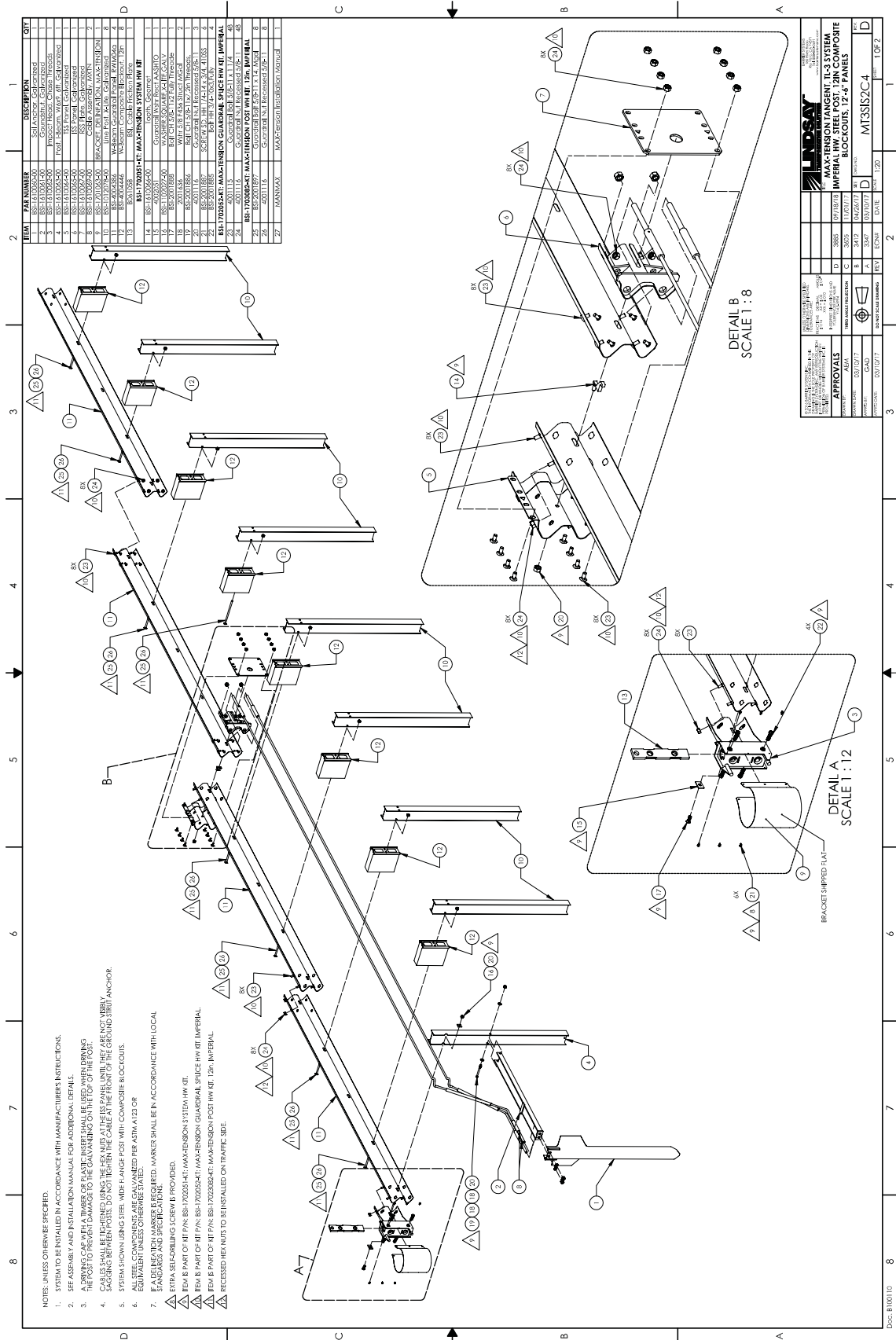


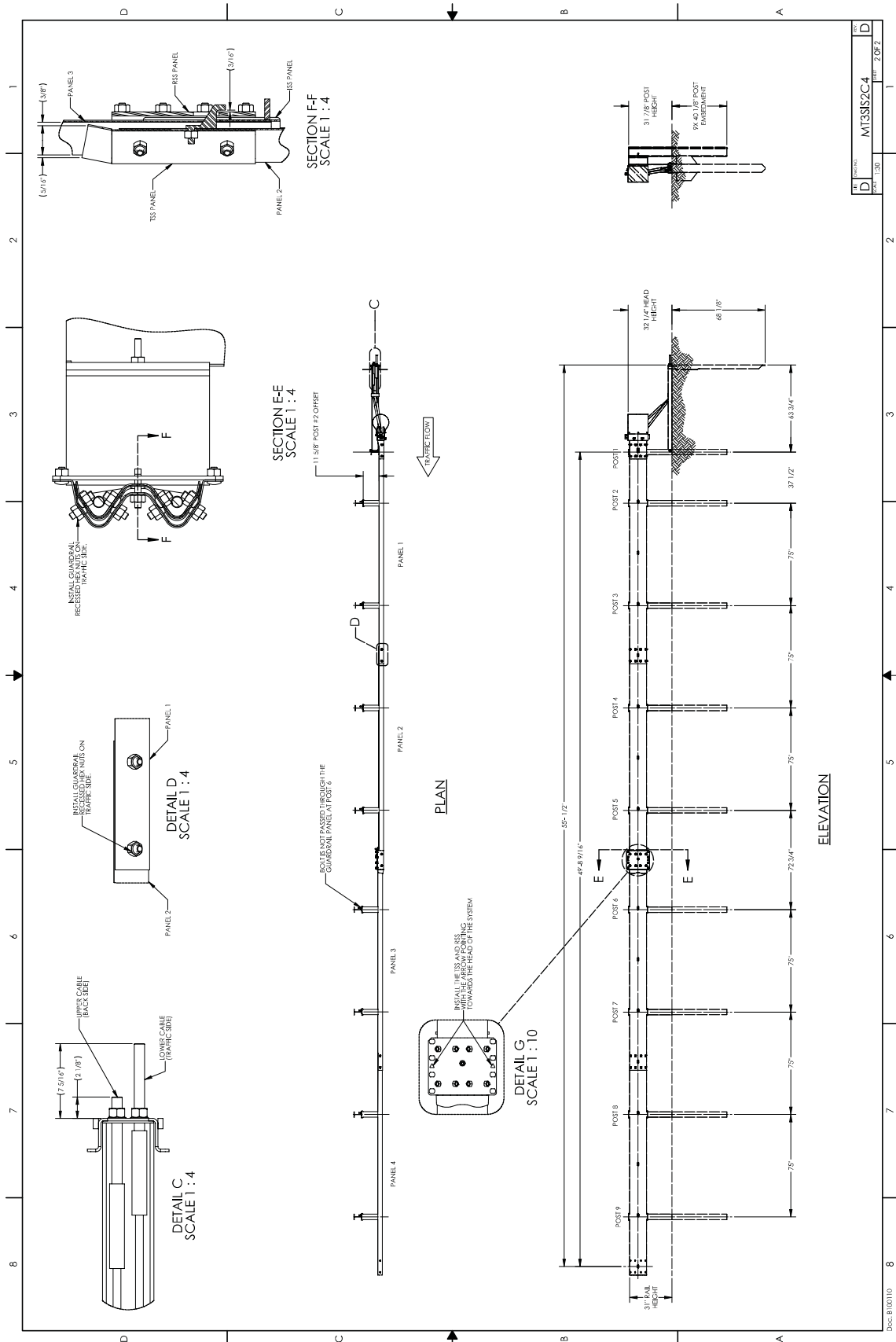
Drawings MAX-TENSION TANGENT TL-3 SYSTEM IMPERIAL HW STEEL POST, 8 IN COMPOSITE BLOCKOUTS, 12'-6" PANELS



Drawings MAX-TENSION TANGENT TL-3 SYSTEM IMPERIAL HW STEEL POST, 12 IN COMPOSITE BLOCKOUTS, 12'-6" PANELS



Drawings MAX-TENSION TANGENT TL-3 SYSTEM IMPERIAL HW STEEL POST, 12 IN COMPOSITE BLOCKOUTS, 12'-6" PANELS



REV	DATE	BY	CHKD	APP'D	DESCRIPTION
D					MT33S2C4
					1/8" = 1'-0"
					1/4" = 2'-0"

Doc. B 100110

Drawings MAX-TENSION TANGENT TL-3 SYSTEM IMPERIAL HW STEEL POST, 12 IN COMPOSITE BLOCKOUTS, 25' PANELS

